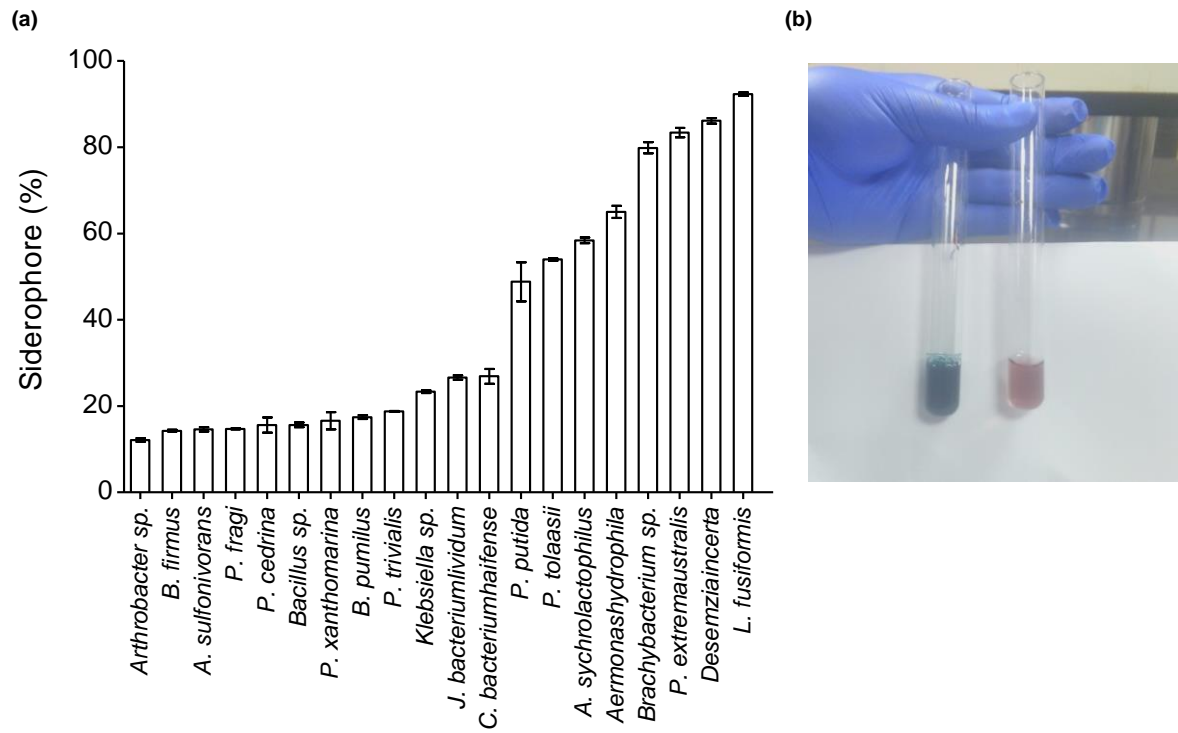


# Foliar Application of Iron Fortified Bacteriosiderophore Improves Growth and Grain Fe Concentration in Wheat and Soybean

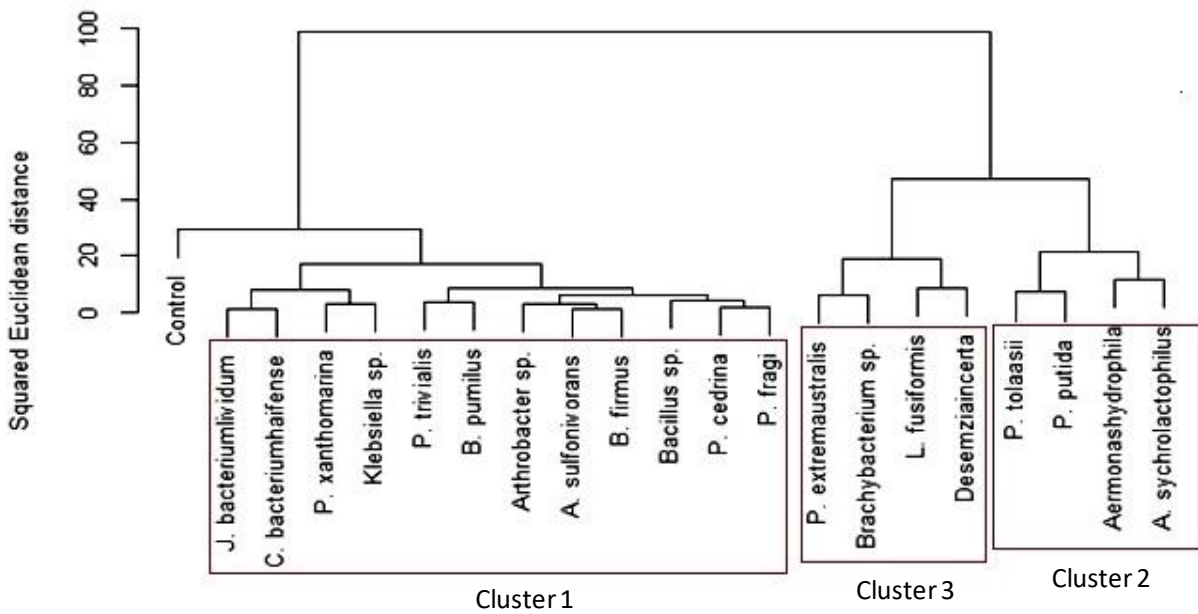
Sandeep Sharma<sup>1,6</sup> • Subhash Chandra<sup>2</sup> • Arun Kumar<sup>3</sup> • Prem Bindraban<sup>4</sup> • Anil Kumar Saxena<sup>5</sup> • Veena Pande<sup>6</sup> • Renu Pandey<sup>1</sup>

**Supplementary Table 1.** Bacterial strains used for evaluation of siderophore production in minimal media (Fe deficient succinate medium)

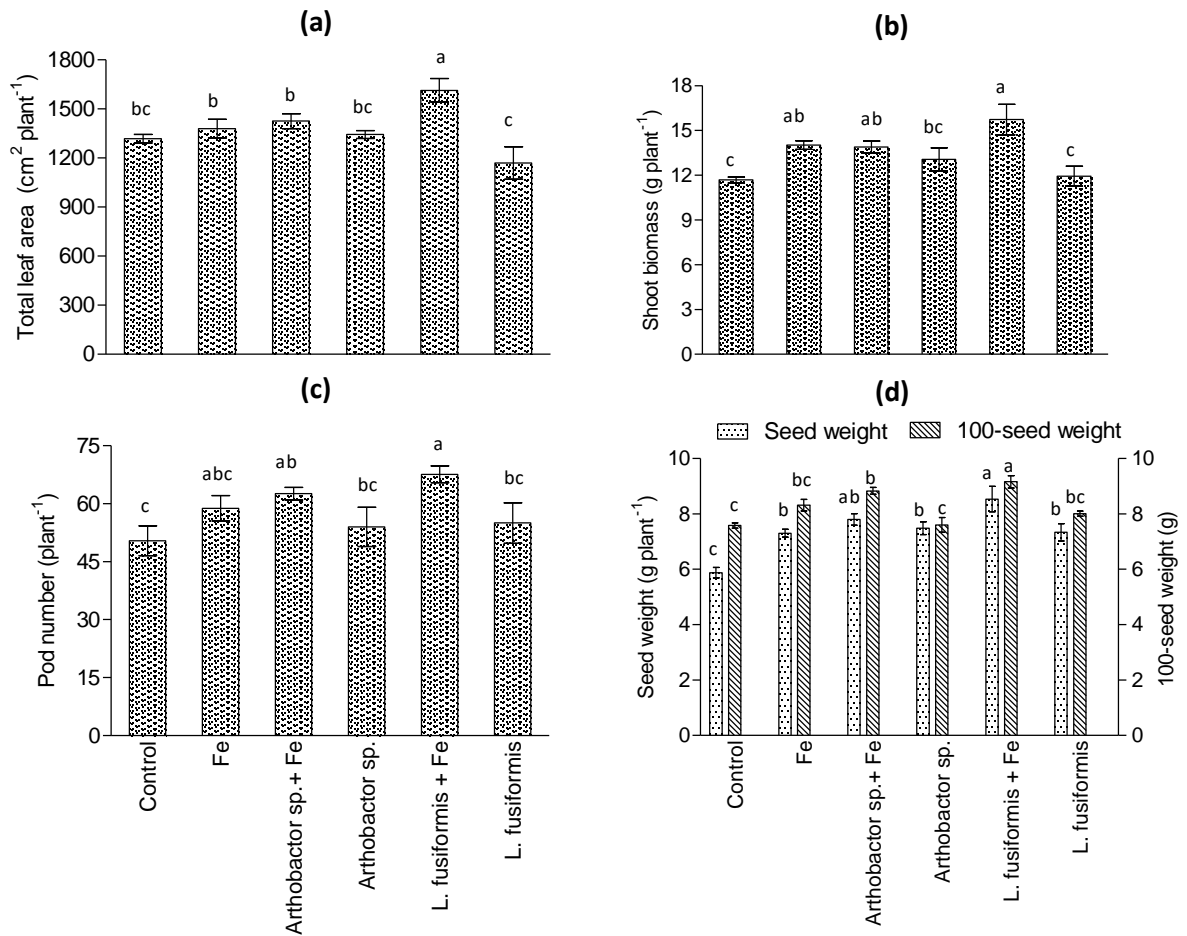
S. No.	Strain No.	Bacteria	Accession No.
1	IARI-R-6	<i>Aeromonas hydrophila</i>	JX429038
2	IARI-R-12	<i>Pseudomonas xanthomarina</i>	JX429041
3	IARI-R-45	<i>Arthrobacter sp.</i>	JX429024
4	IARI-R-46	<i>Arthrobacter psychrolactophilus</i>	JX429025
5	IARI-R-48	<i>Pseudomonas extremaustralis</i>	JX429042
6	IARI-R-50	<i>Janthinobacterium lividum</i>	JX429043
7	IARI-R-53	<i>Pseudomonas cedrina</i>	JX429044
8	IARI-R-57	<i>Pseudomonas fragi</i>	JX429045
9	IARI-R-59	<i>Pseudomonas tolaasii</i>	JX429046
10	IARI-R-64	<i>Pseudomonas trivialis</i>	JX429047
11	IARI-ABL-35	<i>Brachybacterium sp.</i>	KC581678
12	IARI-ABL-29	<i>Klebsiella sp.</i>	KC581672
13	IARI-L-2	<i>Lysinibacillus fusiformis</i>	JF343177
14	IARI-L-16	<i>Arthrobacter sulfonivorans</i>	JN411436
15	IARI-L-21	<i>Bacillus firmus</i>	JF343183
16	IARI-L-46	<i>Desemzia incerta</i>	JF343203
17	IARI-L-54	<i>Bacillus pumilus</i>	JF343193
18	IARI-L-109	<i>Pseudomonas putida</i>	JN411453
19	IARI-B-6	<i>Bacillus sp.</i>	JN411378
20	IARI-S-24	<i>Chryseobacterium haifense</i>	JX460826



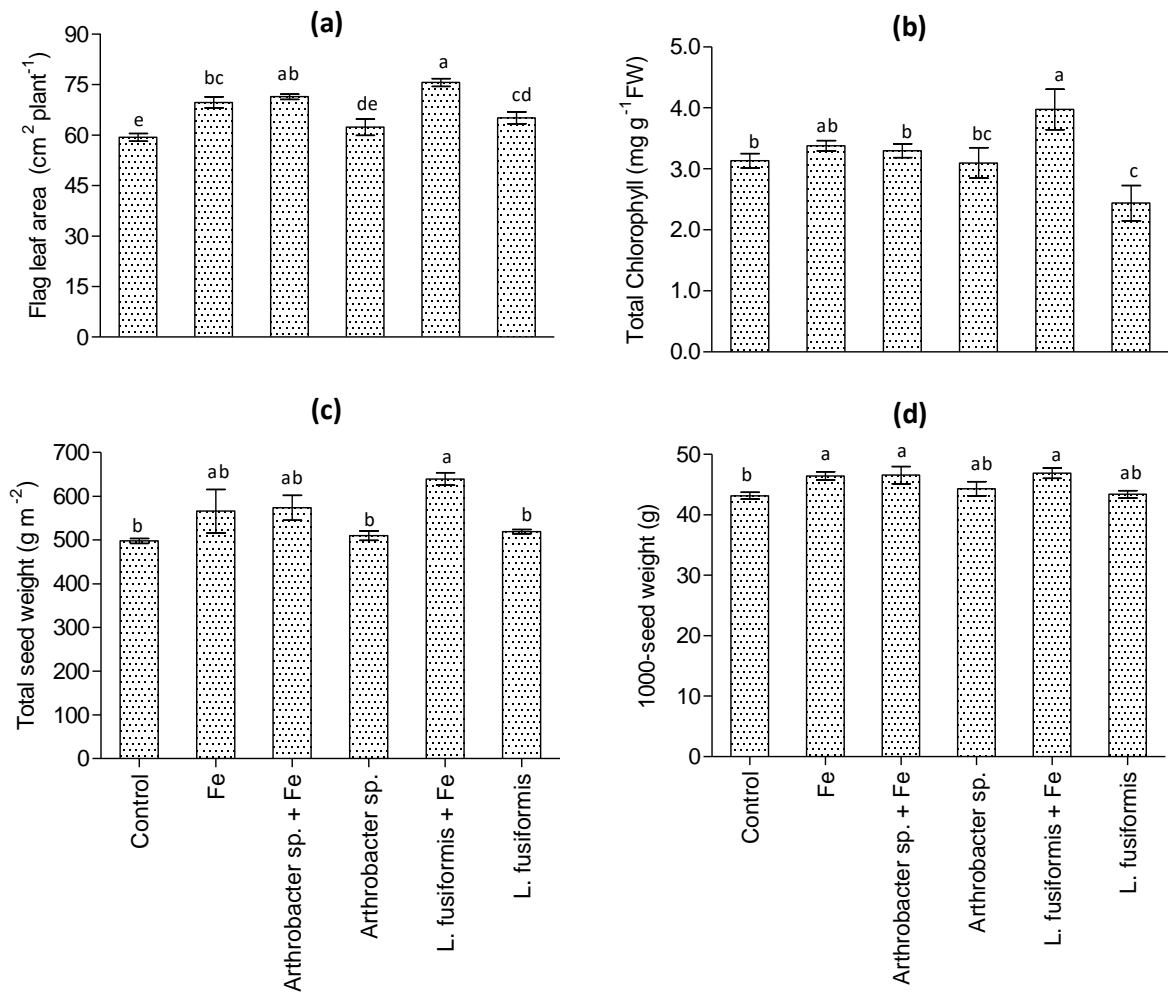
**Supplementary Fig. 1** (a) Siderophore production by twenty bacterial strains in Fe deficient medium, and (b) Quantification of siderophore using chrome azurolsulphonate (CAS) assay. Blue color dye represents blank sample while pink colour shows siderophore bound with CAS dye.



**Supplementary Fig. 2** Clustering of 20 siderophore producing bacterial strains by Ward's method using the squared Euclidean distance matrix of genotype means for trait variables. Bacterial strains producing low siderophore belongs to Cluster 1, Cluster 2 includes intermediate while Cluster 3 includes high siderophore producing strains.



**Supplementary Fig. 3** Influence of foliar application of bacteriosiderophore with and without Fe enrichment on growth and yield of soybean crop. (a) Total leaf area, (b) shoot biomass, (c) pod number, and (d) total seed weight and test weight. Data corresponds to mean  $\pm$  Sem (n=5). Mean with the same letter are not significantly different at  $P \leq 0.05$  according to least significant difference test.



**Supplementary Fig. 4** Influence of foliar application of bacteriosiderophore with and without Fe enrichment on growth and yield of wheat crop. (a) Flag leaf area, (b) total chlorophyll, (c) total seed weight, and (d) test weight. Data corresponds to mean  $\pm$  SEM (n=5). Mean with the same letter are not significantly different at  $P \leq 0.05$  according to least significant difference test.