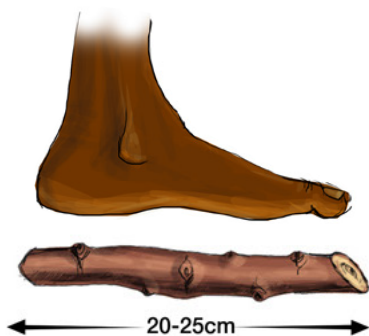
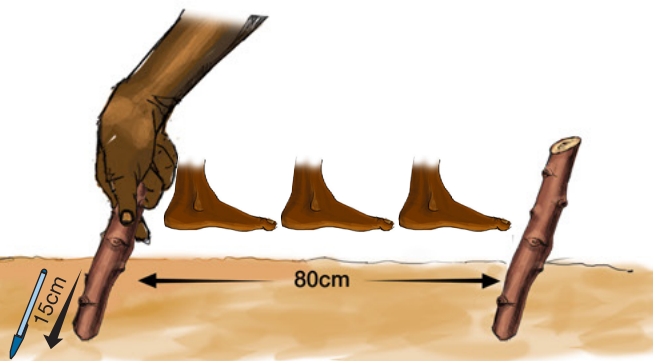


# YADDA ZA A YI ANFANI DA TAKI WAJAN SHUKA **ROGO**

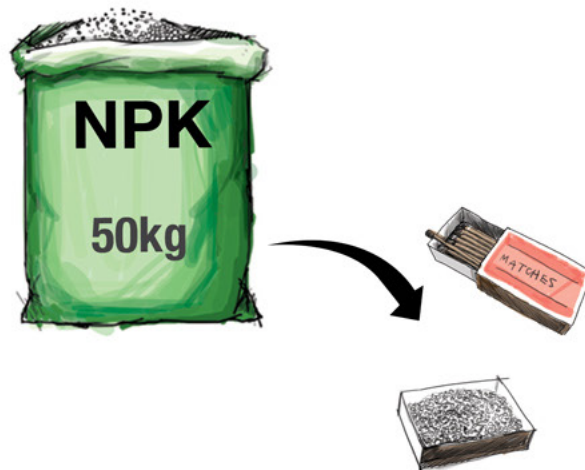
## 1 Yadda za a shuka

Za'a saka rogo zurfin tsayi shabiyar chikin kasa 15cm. Ana bukatar fadi tsakani 80cm.



Ana bukatar rogo yayi tsayi kamar 20-25cm

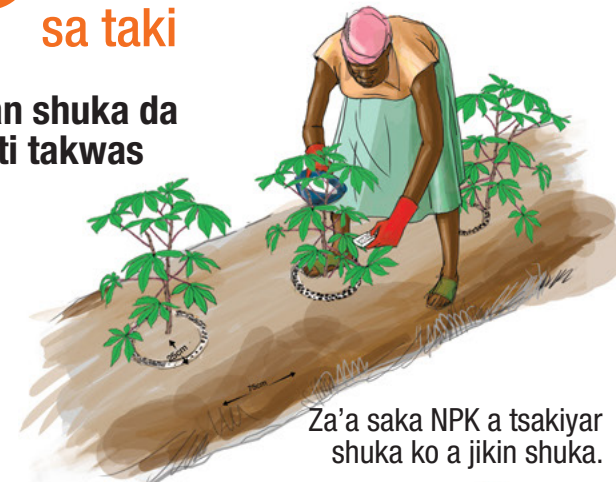
## 2 Takin da za'ayi anfani da shi



Kuma a saka NPK kamar cikin kwalin ashana daya.

## 3 Lokacin da ya kamata a sa taki

Bayan shuka da sati takwas



Za'a saka NPK a tsakiyar shuka ko a jikin shuka.

**Ko kuma**



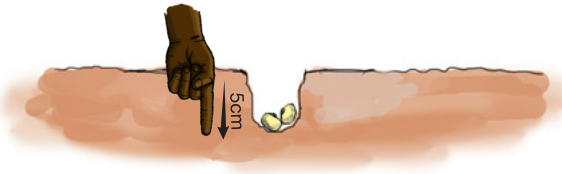
Za'a saka NPK a gefe-gefen shuka.



# HOW TO USE FERTILIZER FOR MAIZE

## 1 Yadda za'a daasa masara

A saka kwayar masara biyu a rami.



A rufe kwayar masara da kasa sosai.



Za'a iya chire guda daya in ana so.



## 2 Yadda za'a saka taki na farko

Bayan shuka da sati biyu zuwa uku.



Za'a saka taki a gefe-gefen shuka

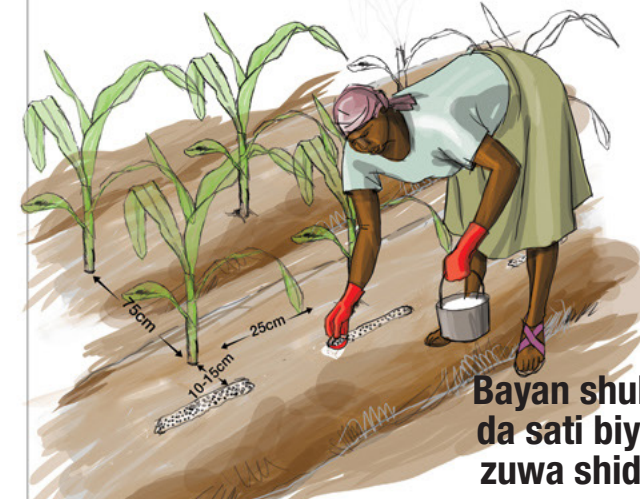


A zuba NPK a tsa kanin sati biyu zuwa uku bayan shuka (A zuba taki, murfin koka kola daya akowani shuka)

## 3 Yadda za'a saka taki na biyu



Za'a saka taki a gefe-gefen shuka



Bayan shuka da sati biyar zuwa shida.

A zuba UREA a tsa kanin sati biyar zuwa shida bayan shuka (A zuba taki, murfin koka kola daya akowani shuka)



# HOW TO USE FERTILIZER FOR RICE

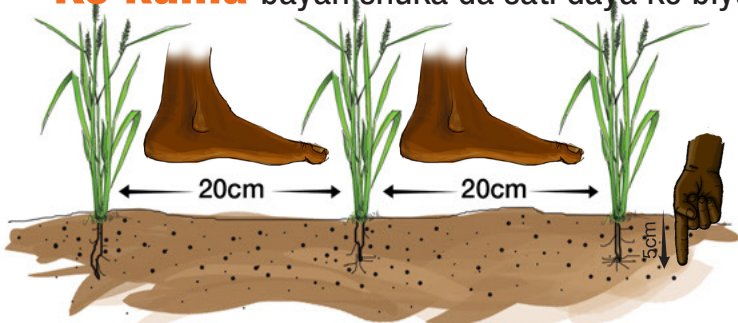
## 1 Yadda za'a saka taki na farko

A watsa NPK 15-15-15 lokacin da za'a yi shara ko gyaran gona.



A watsa buhu biyu na NPK (100kg). A kowani hekta daya Kafin a yi shuka.

**Ko kuma** bayan shuka da sati daya ko biyu.



Shinkafa ya zama na yayi zurfi cikin qasa. Kuma kar a hada su a matse.

## 2 Yadda za'a saka Taki na biyu



Awatsa buhu biyu na UREA (100kg). A kowani hekta daya bayan sati biyar da shuka.



Watsa buhu biyu na Urea bayan anyi ruwa a kowani hekta daya.

